



Refillable Aluminum Sprayer Manual

0.7L



0.9L



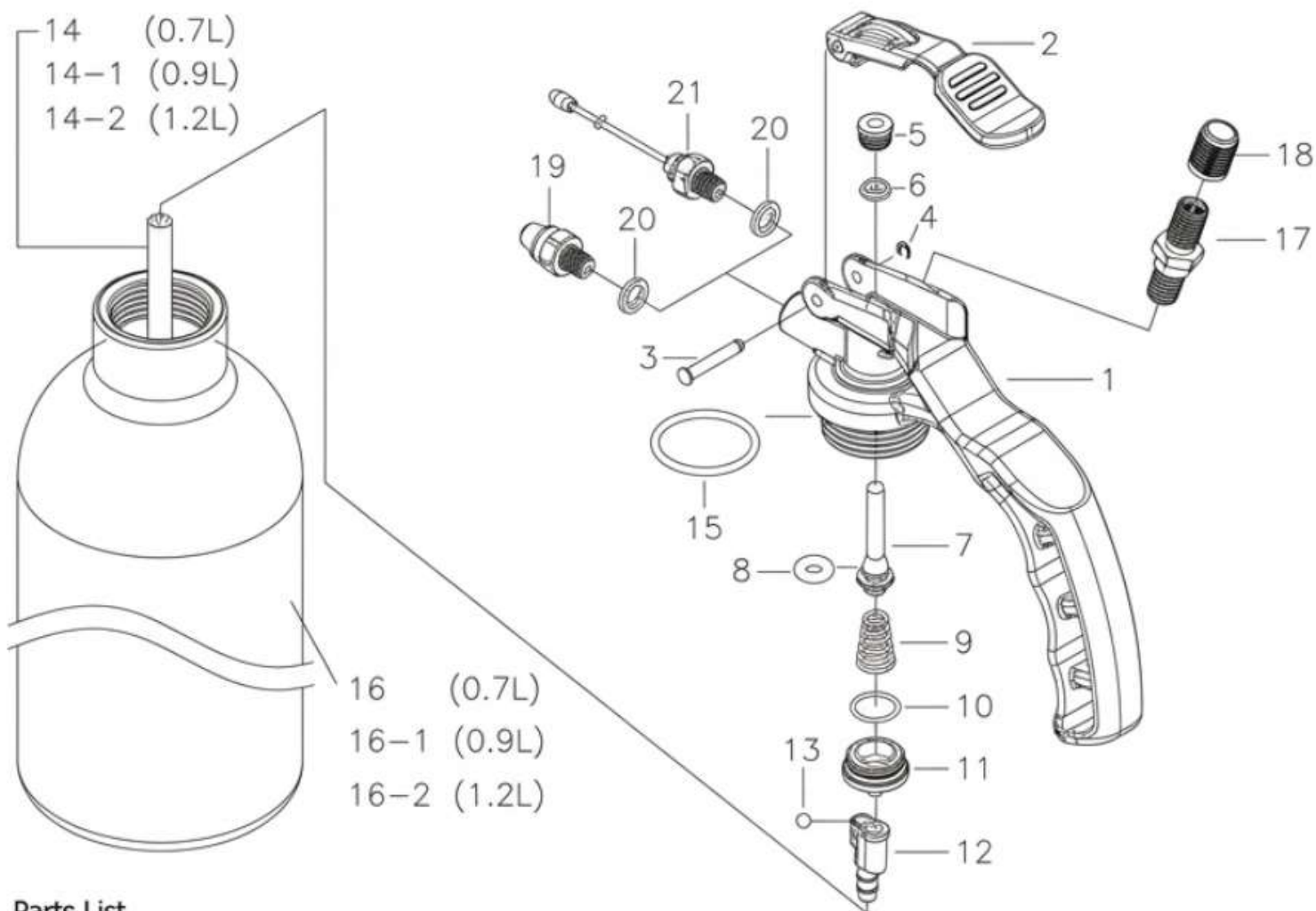
1.2L



- Ideal for lubrication, cleaning brake systems & cleaning tool parts.
- Equipped with a universal valve for easy inflation.
- Thickened aluminum bottles ensure long-lasting durability.
- The Ergonomic handle design for comfort and effortless operation.
- Sustainable and eco-friendly professional solution.

Pat. in : TW, CN, EU, USA.

Refillable Aluminum Sprayer



Parts List

Parts No.	QTY Req	Description	Material	Parts No.	QTY Req	Description	Material
1	1	Handle Type Body	ADC12	12	1	Valve	PA
2	1	Trigger	PA+GF	13	1	Steel Ball	Steel
3	1	Fix Shaft	Steel	14	1	Nylon Tube	Nylon
4	1	E-Lock	Spring Steel	15	1	O-Ring 23.5*2	Viton
5	1	Nut	Copper	16	1	Aluminum Can	Aluminum
6	1	Teflon Gasket	Teflon	17	1	Air Inlet Set	Copper
7	1	Valve Stem	Copper	18	1	Dust Cap	PP
8	1	O-Ring 4.5*2	Viton	19	1	Mist Spray Nozzle	Copper
9	1	Spring	Stainless	20	2	Washer	Teflon
10	1	O Ring 12*1.5	Viton	21	1	Long Jet Type Nozzle	Copper
11	1	Screw	Copper				

The type and specifications may be changed with or without notice.

⚠ WARNING:

- Please always wear certified safety goggles, ear protection & gloves.
- Do not allow children & untrained persons in the work area.
- Do not use with strong chemical or corrosive fluid.
- Do not operate the pressure exceed 200 psi. (13.8 bar, 14 kg/cm²).



Operating Instructions

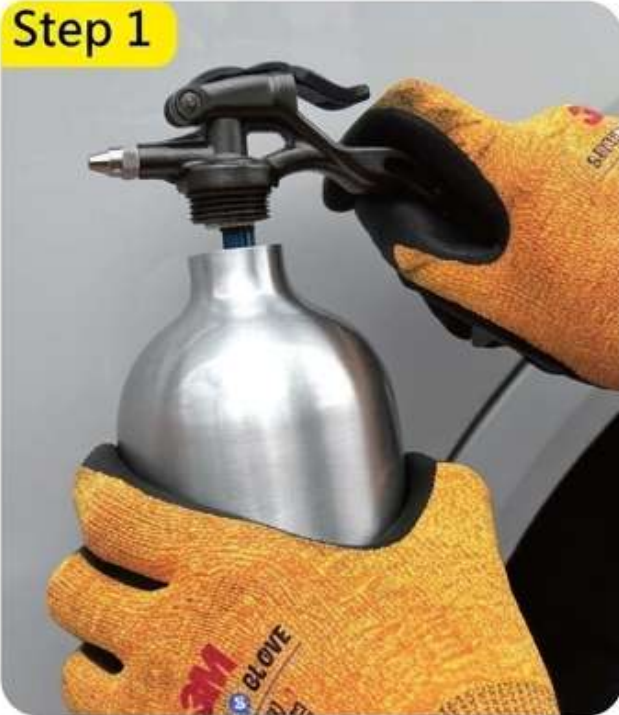
Step 1

- Ensure there is no internal pressure before unscrewing the sprayer head.

Step 2

- Fill with a suitable liquid. (Recommended capacity: 45–70%)

Step 1



Step 2



Step 3

- Tighten clockwise and inflate. (Max. operating pressure :200psi)

Step 3



Step 4

- Use the short nozzle(#19) for a fine mist, and the long nozzle(#21) for a straight stream.

Step 4



5. Use a 10mm wrench to swap the long and short nozzles.

6. Contoured grip with a universal valve stem for quick and easy inflation.

7. Allows upside-down spraying for hard-to-reach areas.

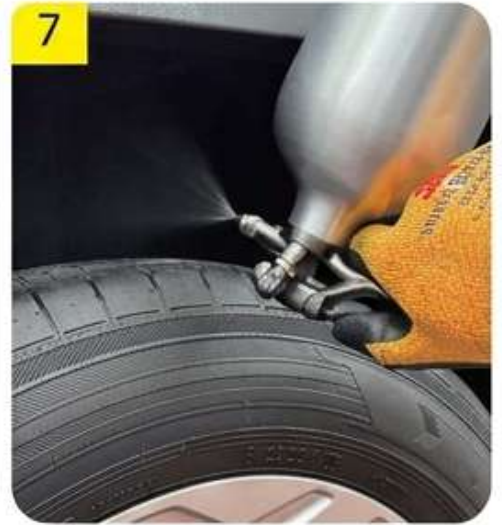
5



6



7



Intended Use

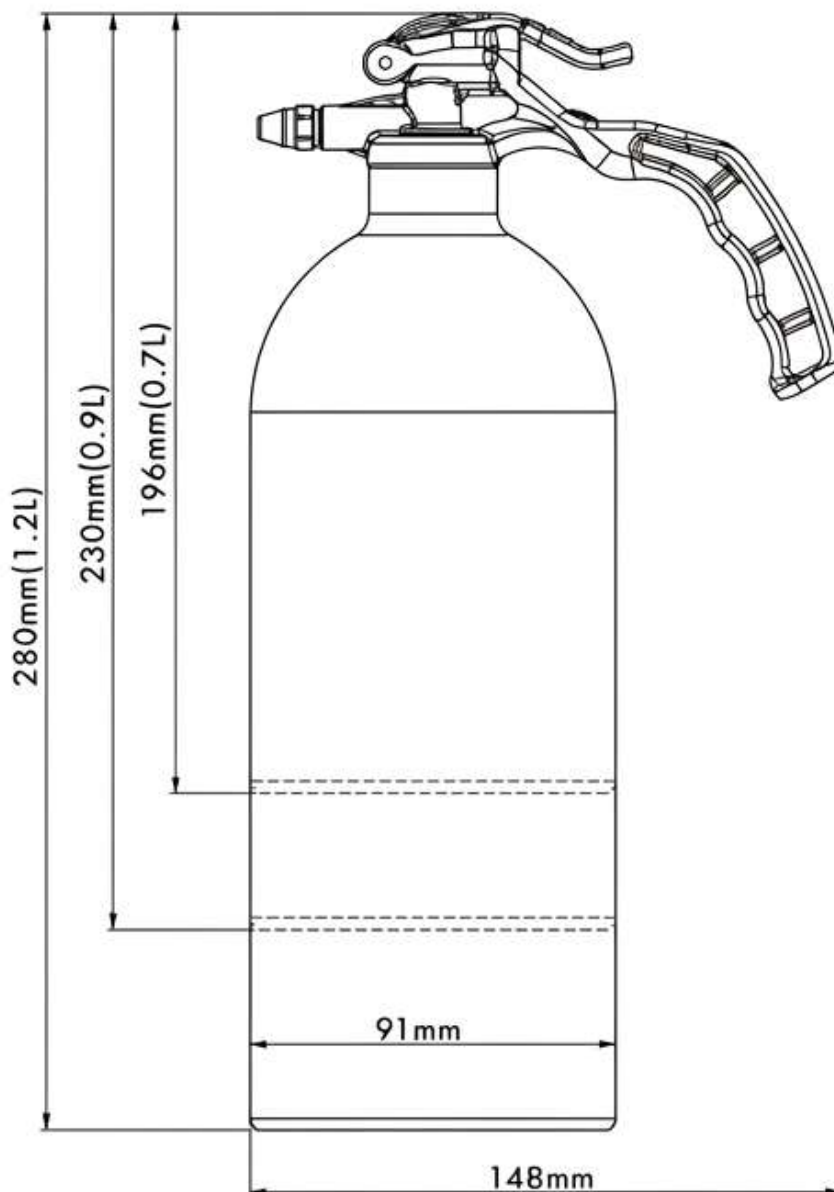
- Suitable for cleaning brake system parts, mechanical components, lubrication, industrial maintenance, and similar applications.
- When the aluminum bottle is empty, it can be temporarily used as an air duster after inflation. (Prolonged use is not recommended.)
- Can store both liquid and compressed air internally for operation.

Safety & Protection

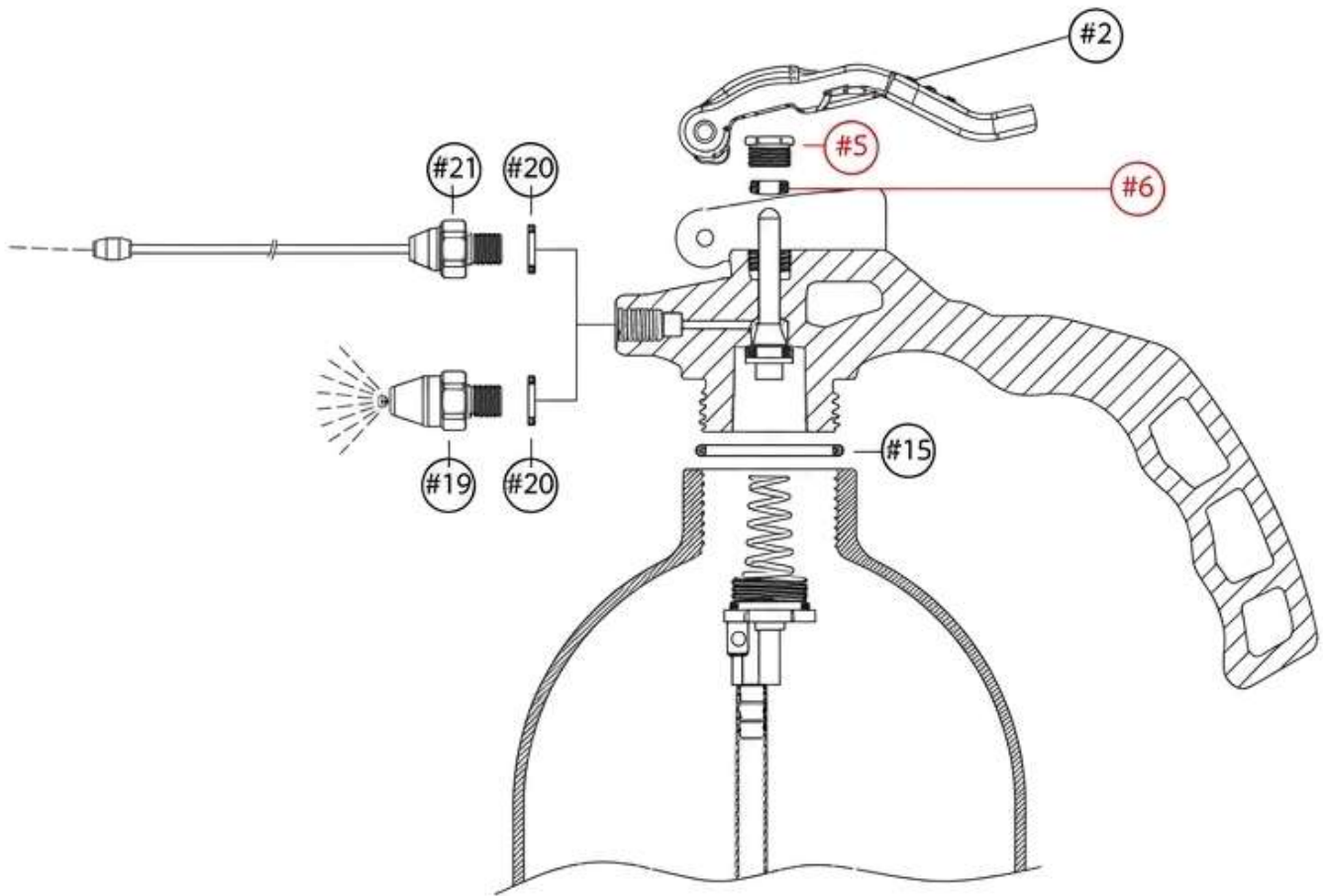
- 🧼 Ensure good ventilation during use.
- 🧤👓🧴 Wear certified gloves, goggles, mask & ear protection.
- ⚡ Inspect the bottle, nozzle, seals before use.
- ⚠️ Stop using if leaks, deformation, or abnormalities detected.

Pressure & Usage Limits

- ⚡ Max. Operating Pressure: 200 psi (13.8 bar, 14kg/cm²)
- ⚠️ Do not store in high-temperature or flammable areas.
- ⚠️ Do not use with strong acids, strong alkalis, or flammable liquids.
- ⚠️ Not for spray painting.



Repair & Troubleshooting



- 1. Nozzle Clogging:** The liquid outlet of nozzles (#19, #21) has a very small diameter (approx. 0.5mm). Impurities in the air or liquid can cause clogs. To fix, remove the nozzle, and use a blower to clear the blockage or replace the part.
- 2. O-Ring Maintenance:** The #15 O-ring is made of Viton and is compatible with most liquids. However, incompatible liquids may cause the O-ring to swell or degrade. (Refer to the "Usage Precautions" section for details.)
- 3. Leakage at Part #5:** If a slight leak occurs at the top of Part #5 after prolonged use, gently tighten it clockwise. This will compress the Teflon cone (Part #6) and restore the airtight seal. If leakage persists, replace Part #6.
- 4. Replacing Part #6:** To replace part #6, first remove the #2 trigger, then unscrew the #5 nut. Use a small flathead screwdriver to remove and replace part #6.
- 5. Adapter Leakage:** If a leak occurs at the spray adapter connection (#20), tighten part #19 or #21 with a 10mm wrench.

Maintain & Care



1. Use filtered compressed air to ensure it is free of impurities.
2. Prevent foreign matter from entering the aluminum bottle when refilling.
3. Periodically flush with clean water to clear the flow channels. This prevents residue buildup and extends the product's lifespan.

Precautions when using liquids in Refillable Aluminum Sprayer:

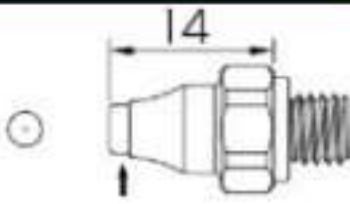
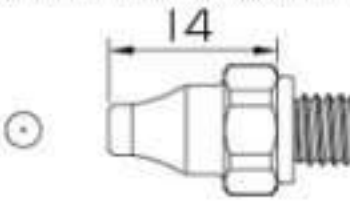
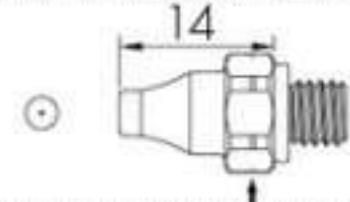
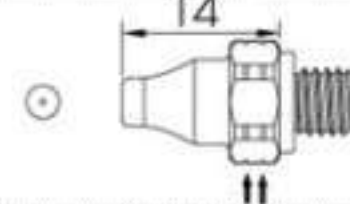
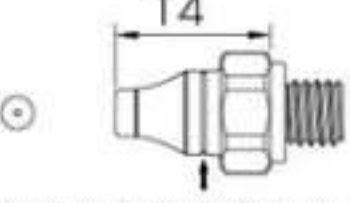
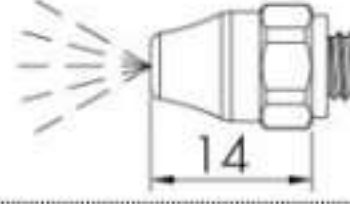

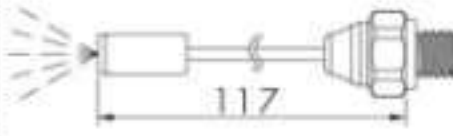
Applicable Model : 0.7L, 0.9L, 1.2L

Foreword:

Although the aluminum bottle features a hydrophobic epoxy phenolic resin coating, storing highly hazardous chemicals is not recommended.

1. For non-corrosive liquids, lubricants (viscosity < 10), anti-rust oils, and spindle oils.
2. Slightly corrosive agents (e.g., rust removers or cleaning agents) can be used but not stored in the bottle. Clean the bottle immediately after use to prevent chemical damage to components.
3.  Do not use highly corrosive chemicals (e.g., hydrofluoric acid, condenser cleaners, strong acids/alkalis). These will destroy the internal coating and may cause safety hazards.
4.  Use with highly volatile liquids (e.g., gasoline, toluene, acetone) is strictly prohibited as they may damage product seals and cause danger.
5. High-viscosity oils may impair spray performance and are not recommended.

**Optional parts: Applicable model:
GTN155R,GTN156R,GTN157R**

GTN158A-A	ø0.5	
GTN158A-B	ø0.8	
GTN158A-C	ø1.0	
GTN158A-D	ø1.2	
GTN158A-E	ø1.5	
GTN158A-F	SPRAY	
GTN158A-G	LONG TYPE ø0.5	
GTN158A-H	LONG TYPE SPRAY	

F.G. mozzle are standard accessories